

Moderní zahrada

Technické výkresy

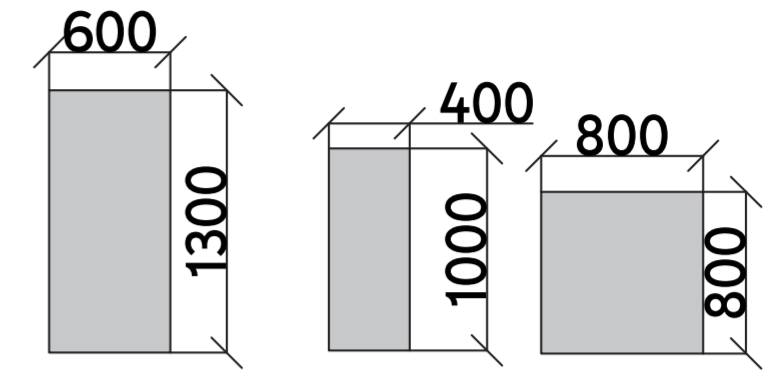
Autor: Ing. Helena Stašová



ZahradyGreen

Údržba Návrhy Realizace

Rozměry betonových šlapáků:
1:40



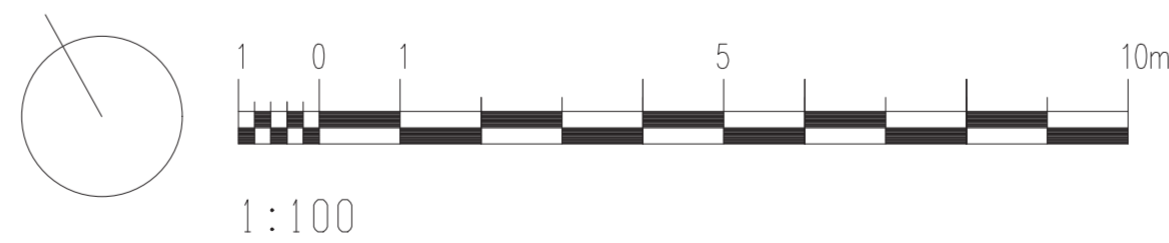
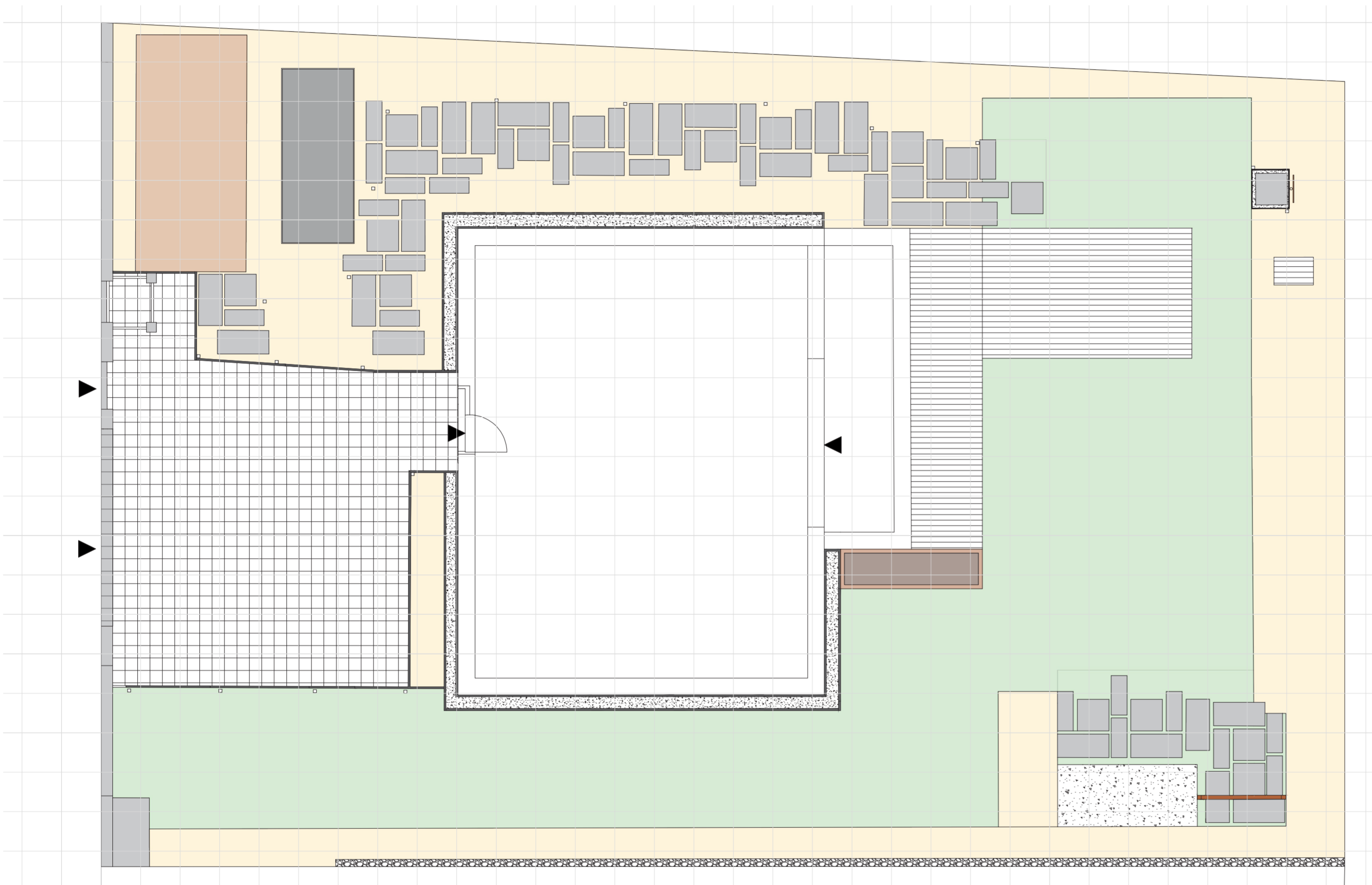
25 ks

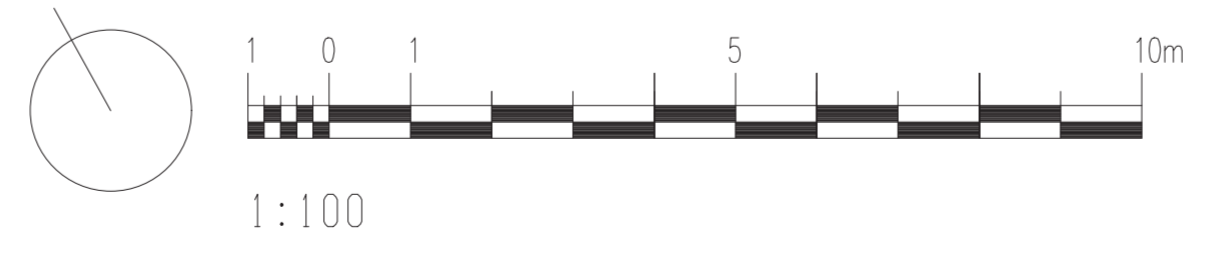
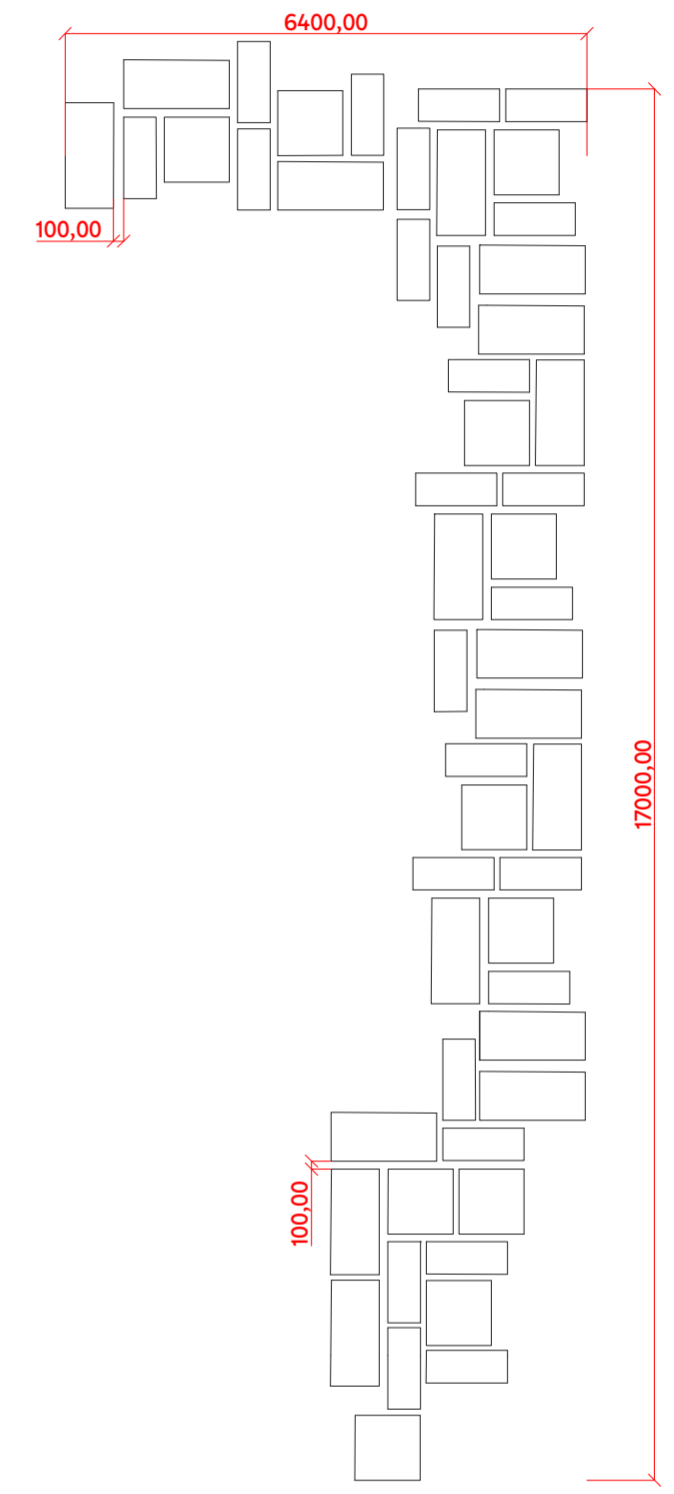
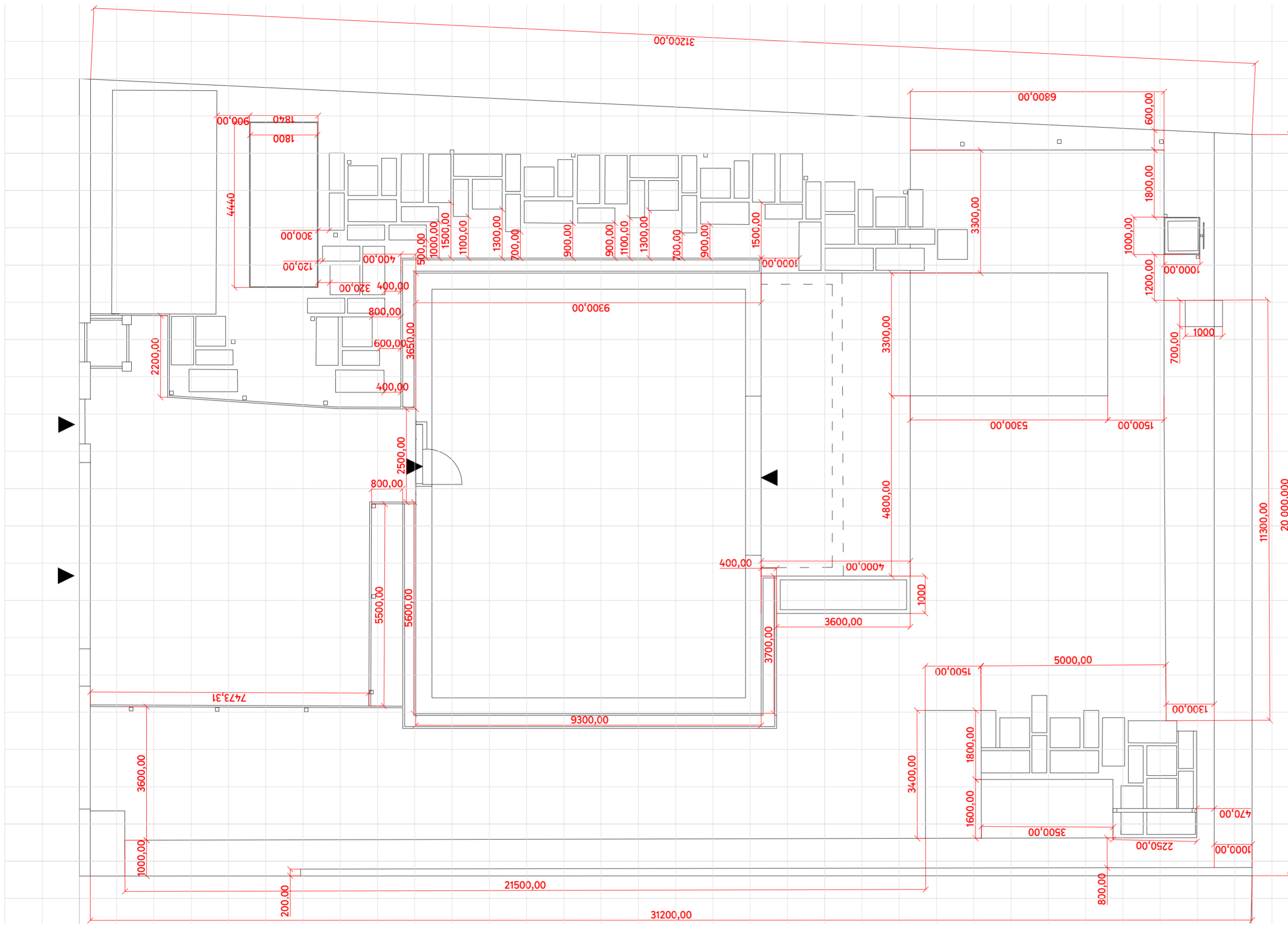
33 ks

17 ks

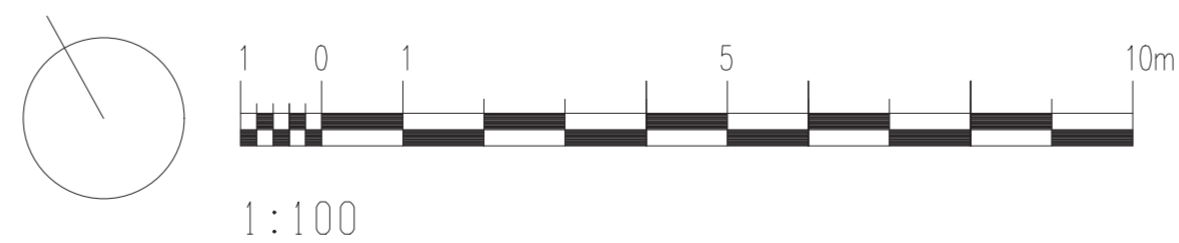
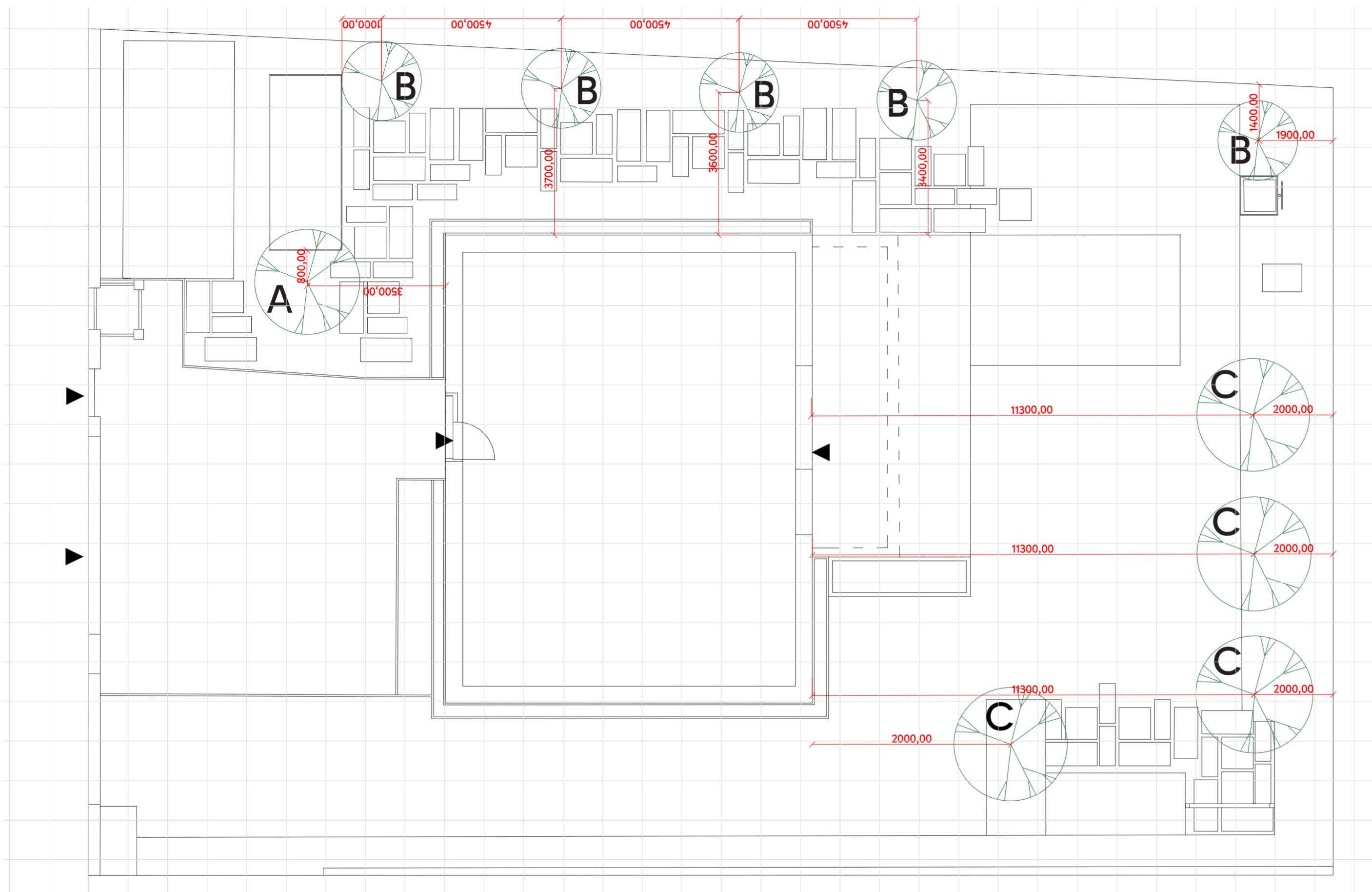
-  trávnik
-  mlat
-  betonové šlapáky
-  dřevoplast
-  gabion
-  zahradní domek
-  gumová dlažba
-  dlažba
-  štěrk

mlatové povrchy 145 m²
travnatý povrch 180 m²
gumová dlažba 7,92 m²



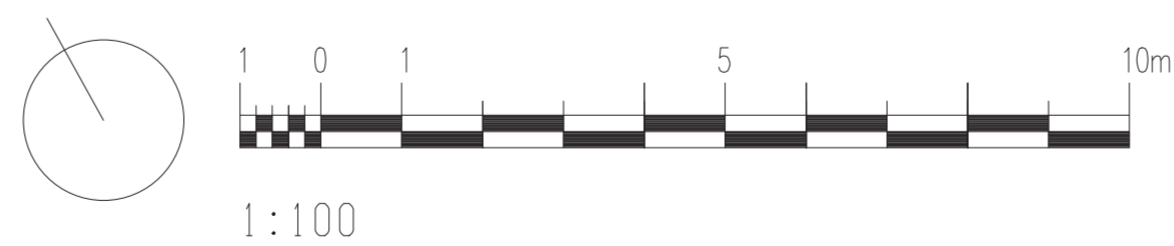


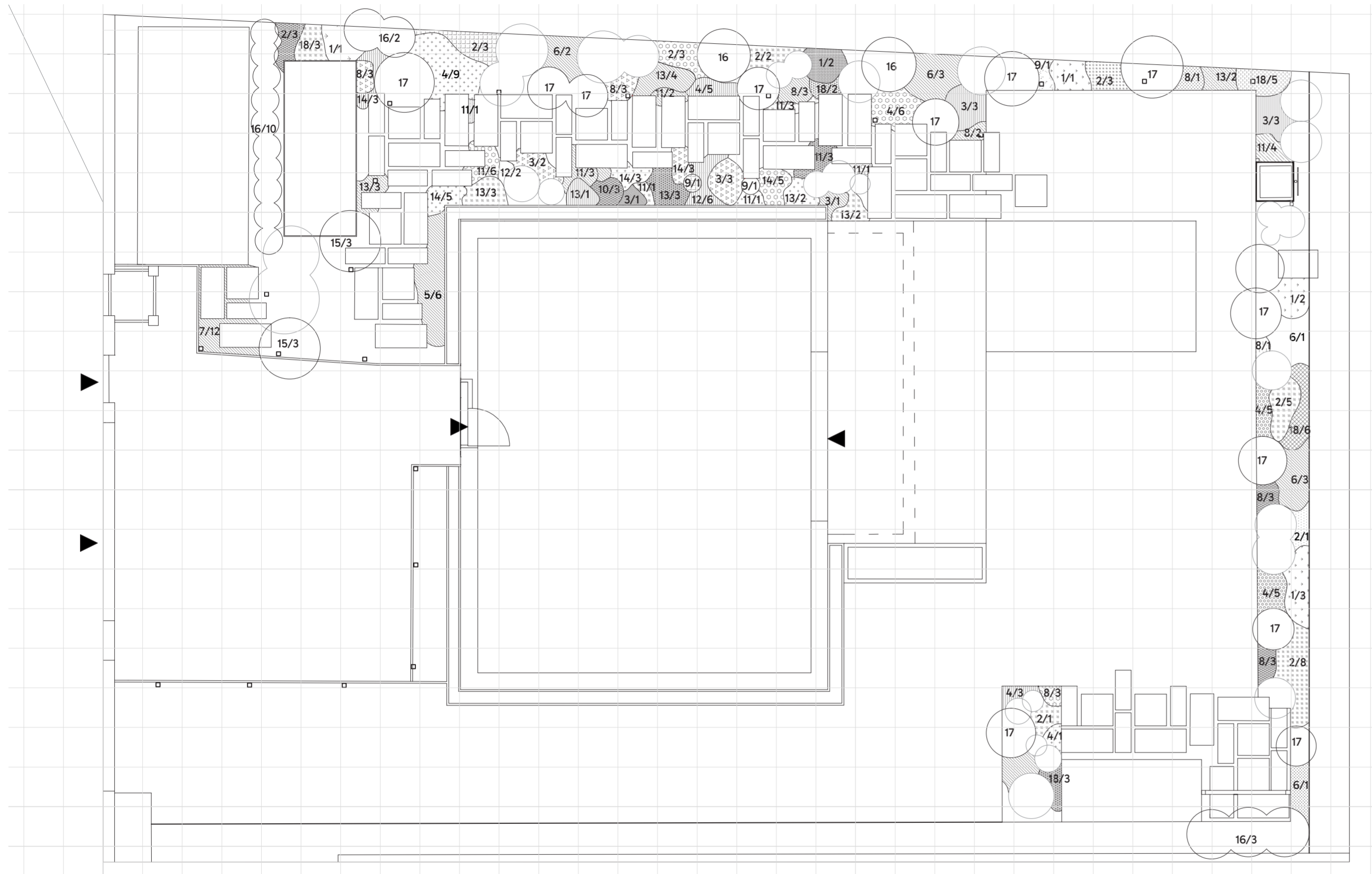
- A *Acer palmatum* 'Osakazuki' 1 ks
- B *Amelanchier laevis* 'Snowflakes' 5 ks
- C *Platanus acerifolia* 'Alphense Globe' 4 ks





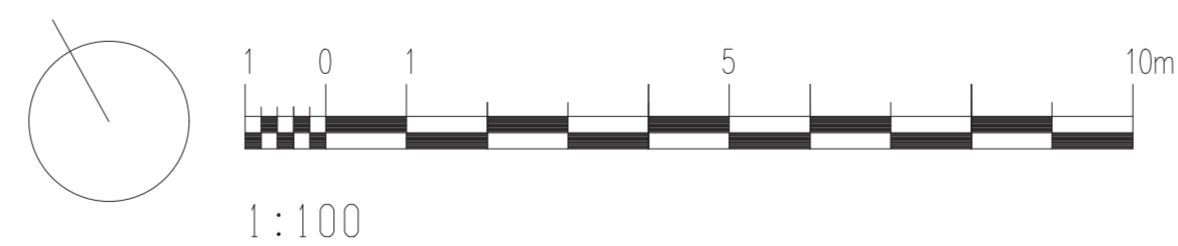
- | | |
|--|-------|
| A Eucalyptus gunnii | 1 ks |
| B Hydrangea arborescens 'Amabelle' | 3 ks |
| C Hydrangea paniculata 'Grandiflora' | 10 ks |
| D Ilex crenata | 20 ks |
| E Thuja occidentalis 'Smaragd' (topiara) | 1 ks |
| F Viburnum plicatum 'Mariesii' | 2 ks |
| G Prunus laurocerasus | 44 ks |
| H Pinus mugo var. Pumilo | 1 ks |
| I Vaccinium corymbolus 'Bluecrop' | 1 ks |
| J Rubus ideaeus 'Polka' | 1 ks |

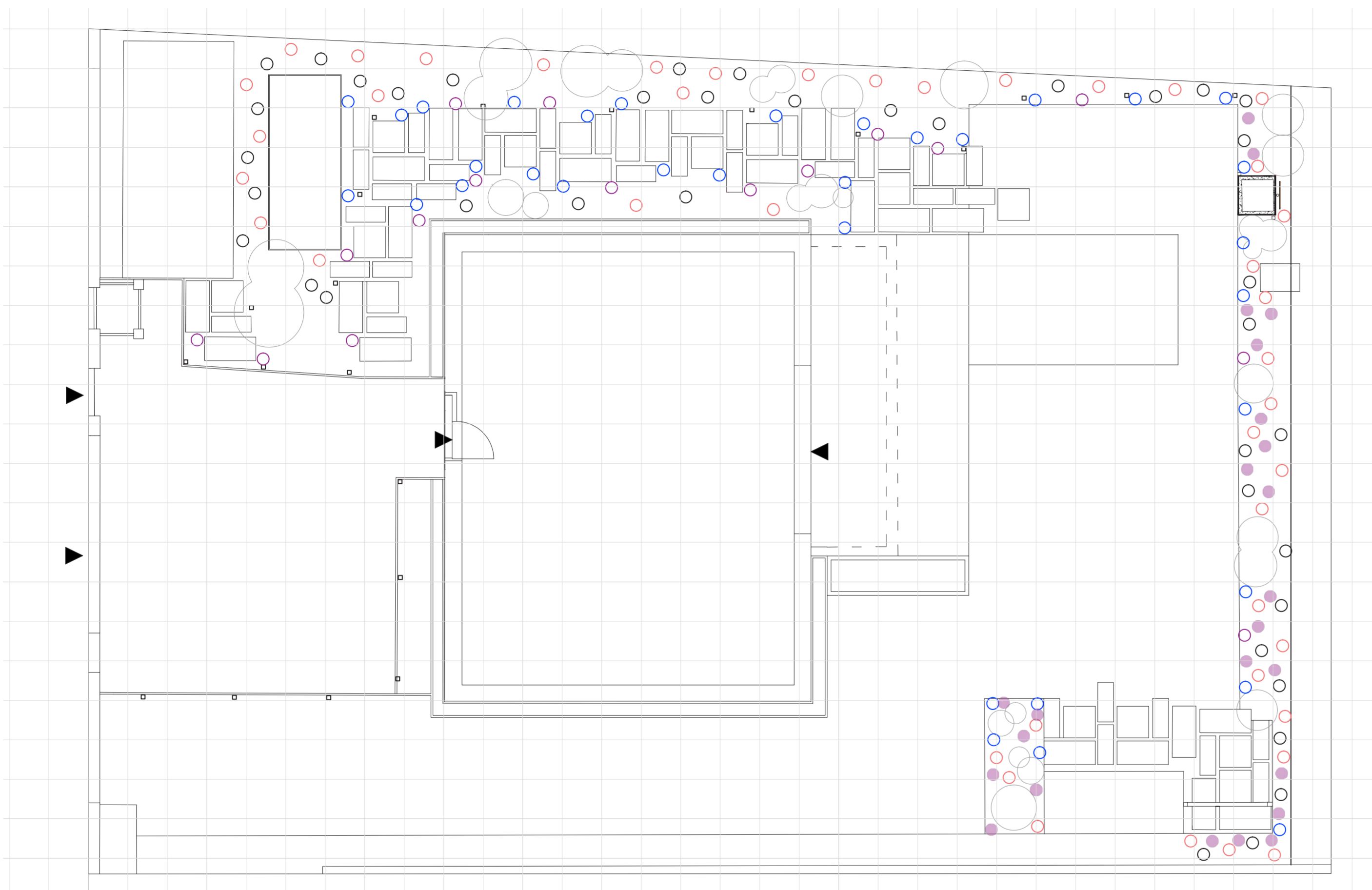




- | | |
|--|-------|
| 1 Achillea filipendulina 'Summer Gold' | 9 ks |
| 2 Aster dumosus 'Kristina' | 29 ks |
| 3 Euphorbia myrsinites | 13 ks |
| 4 Lavandula angustifolia 'Hidcote Blue' | 34 ks |
| 5 Pachysandra terminalis | 6 ks |
| 6 Perovskia atriplicifolia 'Blue Spire' | 9 ks |
| 7 Sagina subulata | 12 ks |
| 8 Salvia nemorosa 'Caradonna' | 22 ks |
| 9 Salvia officinalis 'Berggarten' | 3 ks |
| 10 Sedum hybridum SunSparkler® 'Lime Zinger' | 3 ks |
| 11 Sedum sexangulare 'Weisse Tatra' | 8 ks |
| 12 Sedum spurium 'Voodoo' | 20 ks |
| 13 Sedum spectabile 'Carl' | 20 ks |
| 14 Thymus serpyllum 'Magic Carpet' | 20 ks |
| 15 Hakonechloa macra 'Albostriata' | 6 ks |
| 16 Calamagrostis acutiflora 'Karl Foerster' | 17 ks |
| 17 Sesleria autumnalis | 11 ks |
| 18 Stipa tenuissima 'Ponytails' | 19 ks |

○ keře (podrobně ve výkresu osazovací plán _ keře)





- Allium aflatunense 'Purple Sensation'** - po 1 kuse
- Crocus tommasinianus 'Barr's Purple'** - do hnízd po 7 ks
- Muscari armeniacum** - do hnízd po 7 ks
- Narcissus Triandrus 'Thalia'** - do hnízd po 5 ks
- Tulipa Darwin hybrid 'Pink Impression'** - do hnízd po 5 ks
- keře (podrobně ve výkresu osazovací plán _ keře)

